

47 The Vale  
Stockton-On-Tees  
TS19 0XL



**IH** INGLEBY HOMES









47 The Vale  
£310,000

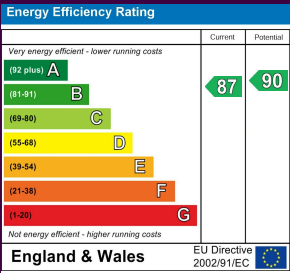


Local Authority

Council Tax Band

E

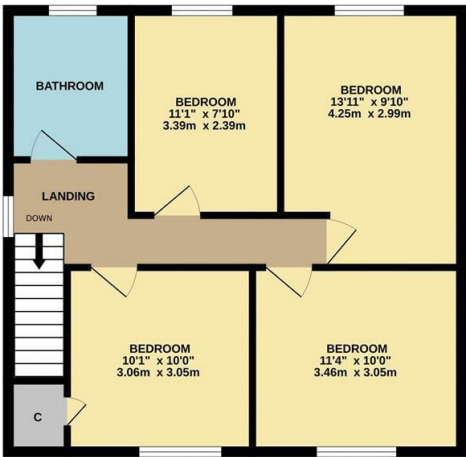
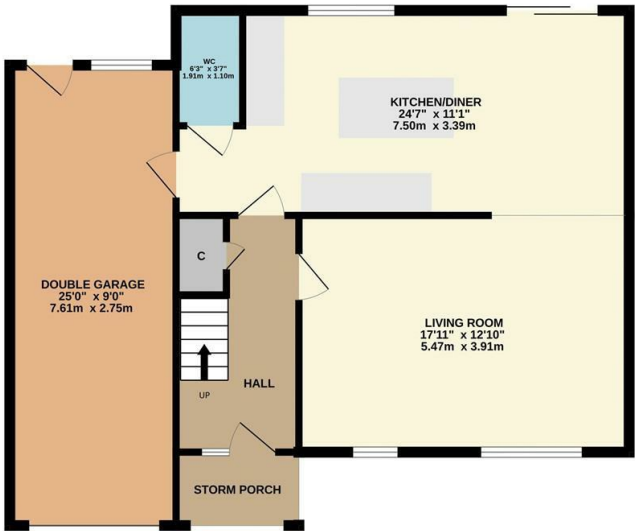
Directions



Agents Note: Whilst every care has been taken to prepare these particulars, they are for guidance purposes only. All measurements are approximate and are for general guidance purposes only and whilst every care has been taken to ensure their accuracy, they should not be relied upon and potential buyers/tenants are advised to recheck the measurements

GROUND FLOOR  
841 sq.ft. (78.2 sq.m.) approx.

1ST FLOOR  
589 sq.ft. (54.7 sq.m.) approx.



TOTAL FLOOR AREA : 1430 sq.ft. (132.9 sq.m.) approx.

Whilst every attempt has been made to ensure the accuracy of the floorplan contained here, measurements of doors, windows, rooms and any other items are approximate and no responsibility is taken for any error, omission or mis-statement. This plan is for illustrative purposes only and should be used as such by any prospective purchaser. The services, systems and appliances shown have not been tested and no guarantee as to their operability or efficiency can be given.

Made with Metropix ©2025



Ingleby Homes  
6 Halegrove Court  
Stockton On Tees  
TS18 3DB



Contact

01642 671025

[karen@ingleby-homes.co.uk](mailto:karen@ingleby-homes.co.uk)

[www.ingleby-homes.co.uk](http://www.ingleby-homes.co.uk)

**IH** INGLEBY HOMES